

Antimicrobial Protection

for the Fabrics that Touch your Life



- TOWELS
- UNIFORMS
- LAB COATS
- PROTECTIVE PADS
- EQUIPMENT BAGS
- MEDICAL SCRUBS
- HOSPITAL TEXTILES
- BED LINENS
- BLANKETS
- PET BEDS
- STUFFED ANIMALS
- CLOTHING
- SOCKS
- UNDER GARMENTS
- SHOES
- BABY CLOTHES
- & MORE

Give your washable fabrics long-lasting protection from the growth harmful bacteria, mold and mildew with FabricAide®. Just one application of FabricAide, added to the rinse cycle of your washing machine, will inhibit the growth of a wide array of bacteria, mold, and fungi on any fabric or textile for **90 days**. No other product in the world can continually and proactively eliminate odor, staining and deterioration caused by microbial contaminants like FabricAide.

FabricAide

- *Creates an environmentally-friendly, non-toxic and hypoallergenic antimicrobial barrier on fabrics.*
- *Unique antimicrobial product that delivers antimicrobial protection through the wash.*
- *Proven to continually fight the growth of bacteria, fungi and mold on all washable fabric.*
- *High-performance, non-leaching antimicrobial characteristics allow for proactive and constant prevention of odor, staining and deterioration.*
- *One application lasts **90 days**.*
- *Available in retail and commercial sizes.*
- *Invisible, odorless & will not affect the appearance of fabrics.*
- *Will not create adaptive organisms or “super bugs”.*



The antimicrobial technology behind FabricAide is used by:

U.S. ARMY

UNIVERSITY OF NOTRE DAME

NATIONAL ATHLETIC TRAINERS ASSOCIATION

WASHINGTON WIZARDS

US OLYMPIC BASKETBALL

NEW YORK YANKEES

MIAMI HEAT

COLUMBIA UNIVERSITY

FAIRFAX COUNTY PUBLIC SCHOOLS

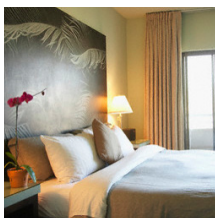
Safe & Easy
to Use



Using FabricAide

Preparation

- Garments must be clean prior to the application of FabricAide into your washing machine. If dirty, wash them prior to the antimicrobial treatment.
- The application of FabricAide must be done separately from normal washing. Do not mix with regular detergent.



Application

- Pour 4 oz. of FabricAide into final rinse water of the washing cycle. Do not use in conjunction with any other laundry products.
- For front loaders, pour into dispenser for the final rinse cycle.
- Dry garments as usual.



Fabric Usage Guidelines

A typical mid-sized washing machine is capable of handling 9 lbs. of laundry. As the usage guideline chart below illustrates, a 4 oz. application of FabricAide will deliver long-lasting antimicrobial protection to a full load of laundry. For higher capacity washers or commercial application of FabricAide, refer to the usage guidelines chart below.

Laundry in lbs.	FabricAide oz.
9	4
25	12
50	24
100	46
150	68
200	92

